

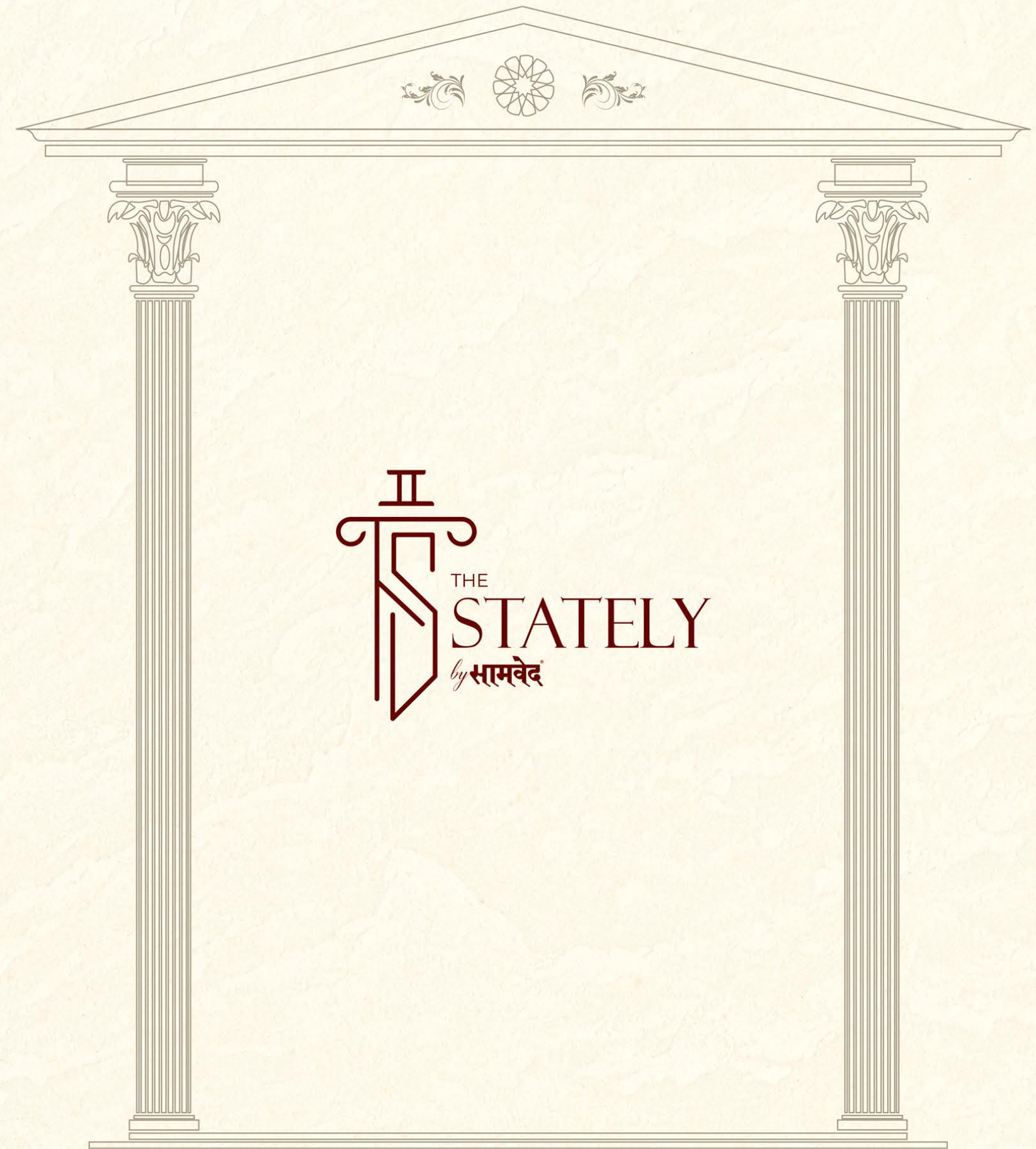
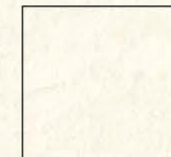
A PROJECT BY
सामवेद[®]
GROUP
CREATING EXCELLENCE

SCAN FOR
LOCATION



ADDRESS :
THE STATELY, School of Achiever Road,
Opp. Toritos Restaurant, Kudasán, Gandhinagar 382421.
Mo. 76 00 76 6815

SCAN FOR
E BROCHURE



THE STATELY
by सामवेद

3 & 4 BHK SPACIOUS LIVING & SHOWROOMS





Samved group under supervision of Mr. Jignesh Patel is Recognised & Awarded as the most trusted real estate developer of Gandhinagar. More than the award, its the faith that people have shown in us is what keeps us motivated. Committed to a mission of creating excellence, we are filled with gratitude to introduce to our latest project - The Stately.

Only a masterclass recognizes another. The SAMVED Group has been the torchbearer for transforming the city's skyline. We believe in involving all of our heart and soul to deliver the best. Planner's sensitivity to your requirements and our commitment of building the best works hand in hand. The smiles of countless families is what keeps us motivated. We welcome you to join our clan... to call yourself 'owner of the best house of the city'.

SUCCESS STORY

Snehkunj Elegance

Samved Amara | Samved Dreams | Samved Green Valley
The Urbania

ON GOING

Samved Opera Melody | Samved Opera Symphony |
The Grassland
& Now THE STATELY

To be continued...



INTRODUCING

the trend setter !!!

The luxurious residential of THE STATELY BY SAMVED, that brings together a never before living experience with state-of-the-art amenities and features. These thoughtfully designed homes will bring luxury to every door step. This beautifully crafted Roman style homes are truly an architectural marvel with a resort like ambience.

Presenting a world where everything you've ever wanted in a home becomes a reality.



@ GANDHINAGAR

3 & 4 BHK
SPACIOUS LIVING & SHOWROOMS

3 SIDE OPEN
FOR LIFETIME

A decorative frame consisting of two classical columns supporting a triangular pediment. The frame is rendered in a dark red color. Inside the frame, the title 'THE ROMAN MYSTIQUE' is centered, followed by a decorative flourish and a paragraph of text. The background of the page features a faint, light-colored architectural drawing of a classical building facade, similar to the one on page 04.

THE ROMAN MYSTIQUE

With the incorporation of suave and stylish Roman architecture, every structure acquires a regal taste. Now Gandhinagar will experience something that Romans have been famous for - lavish lifestyle, arched gateways, spectacular luxury and royal residences.

After all,
those who deserve are just an elite few...



PRESTIGIOUS ROMAN-THEMED RESIDENTIAL HOMES



The triangular archway hailing from the Neo Classical architecture period, signifies the Roman blend of class and sophistication in each of the canopies as well as the grand elevation.



SPACE
THAT SERENADE YOUR DAY



Spacious Gazebo Seating is the perfect place to be at. Sit peacefully and have a delightful chit chat with your neighbours or loved ones.

THE ARCHED ELEVATION





THE FLORAL AMBIENCE



Blessed with floral surroundings and green environment. The Stately brings solace and sustenance to its residents with fresh air and vibrant atmosphere.





THE ROYAL
SURROUNDINGS





AMENITIES



- Attractive Entrance Foyer
- Pickup - Drop Off Zone
- Gym
- Prayer / Tuition Room
- Automatic Boom Barrier
- Senior Citizen Seating
- Common Wash Area/Toilet
- Toddlers Play Area
- Society Office
- Jula Court & Sitting Area
- Garden
- Children's Play Area
- Library
- Multipurpose Hall / Gathering Space
- Badminton Court
- PNG Connections
- Fire Safety
- Rainwater Harvesting
- Fully Automatic Premium Elevator
- Indoor Games
- 24x7 Security
- 24x7 Water Supply
- Water Body
- CCTV
- Allotted Car Parking
- Solar Panel For Common Area
- Door To Door Garbage Collection
- Power Backup Generator
- DTH, Tele, Wiring Facilities
- Indoor Theater

A MONUMENTAL
ROMAN-THEMED ENTRANCE
WELCOMES YOU...





A COMMUNITY THAT INVOLVES TOGETHER

The Stately presents the signature style Life. It brings forth a lifestyle for those who have a fine taste for life and exclusivity. Step into a home that blends innovation with style creating contemporary spaces that are a class apart.



GROUND FLOOR PLAN



FIRST FLOOR PLAN

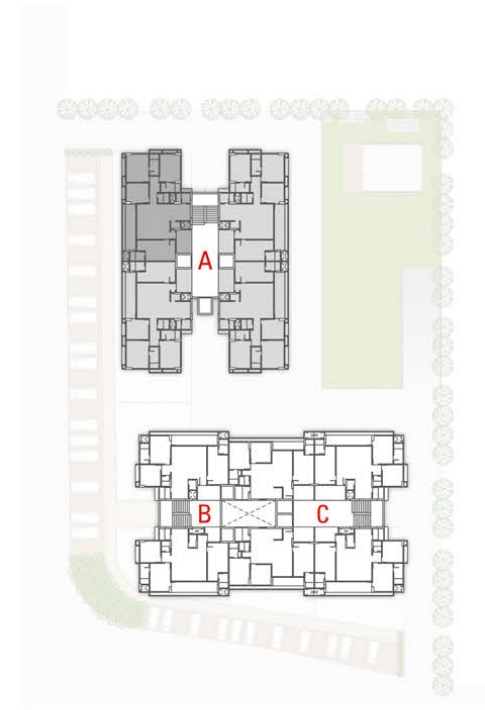


TYPICAL FLOOR PLAN |



13TH FLOOR PLAN |



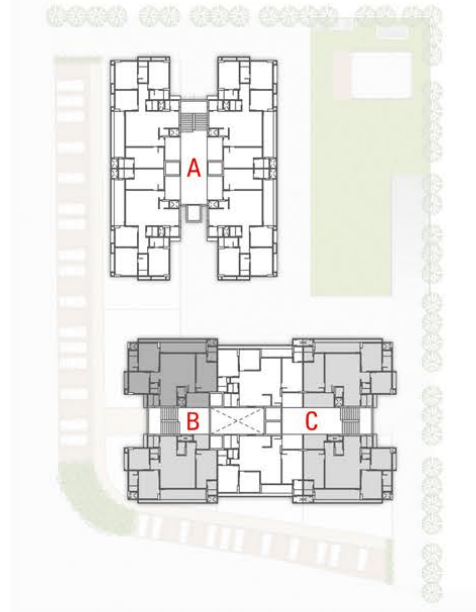


4 BHK UNIT PLAN

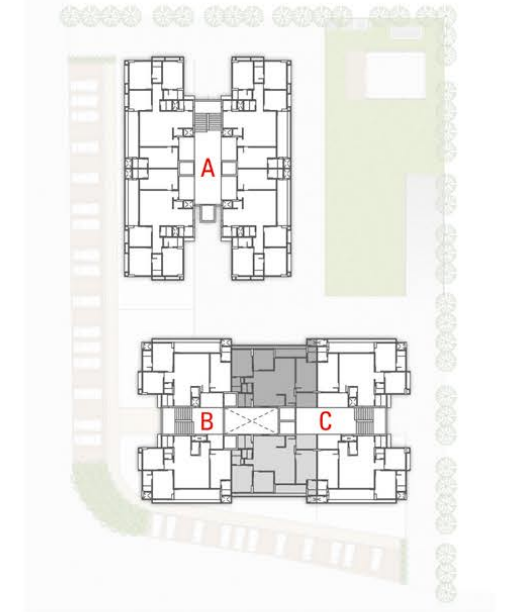
{ BLOCK - A }

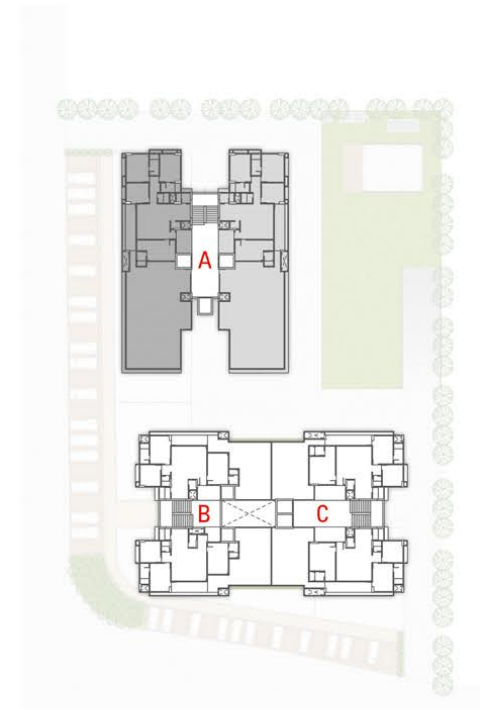


3 BHK UNIT PLAN {BLOCK - B & C | CORNER - UNIT}



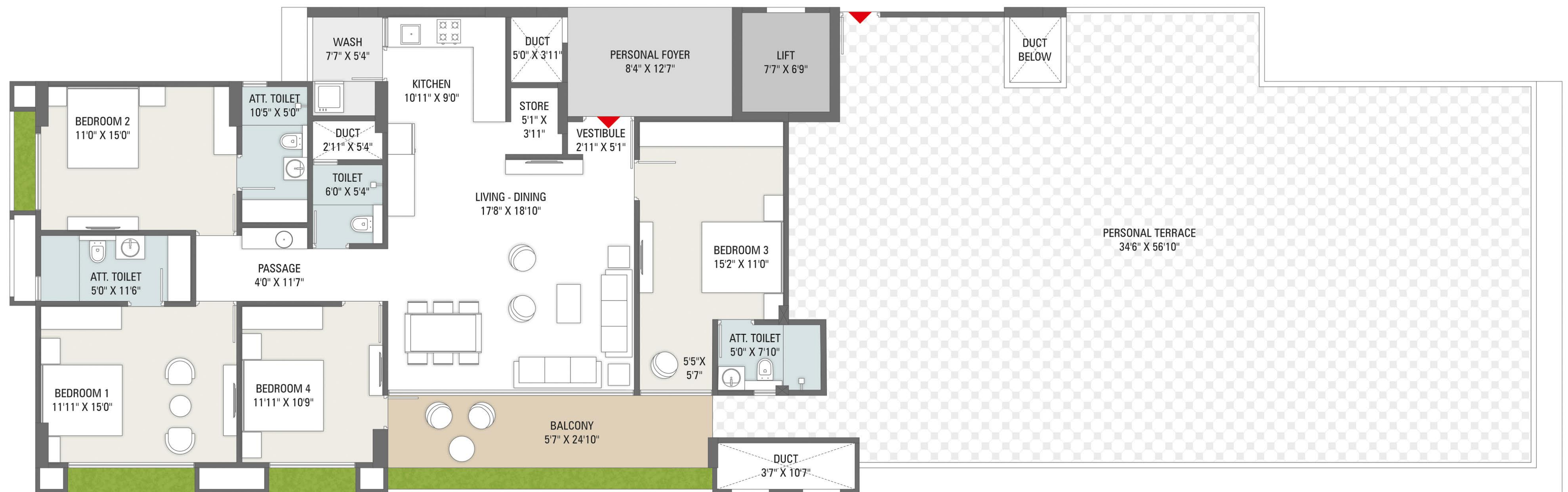
3 BHK UNIT PLAN {BLOCK - B & C | CENTER - UNIT}

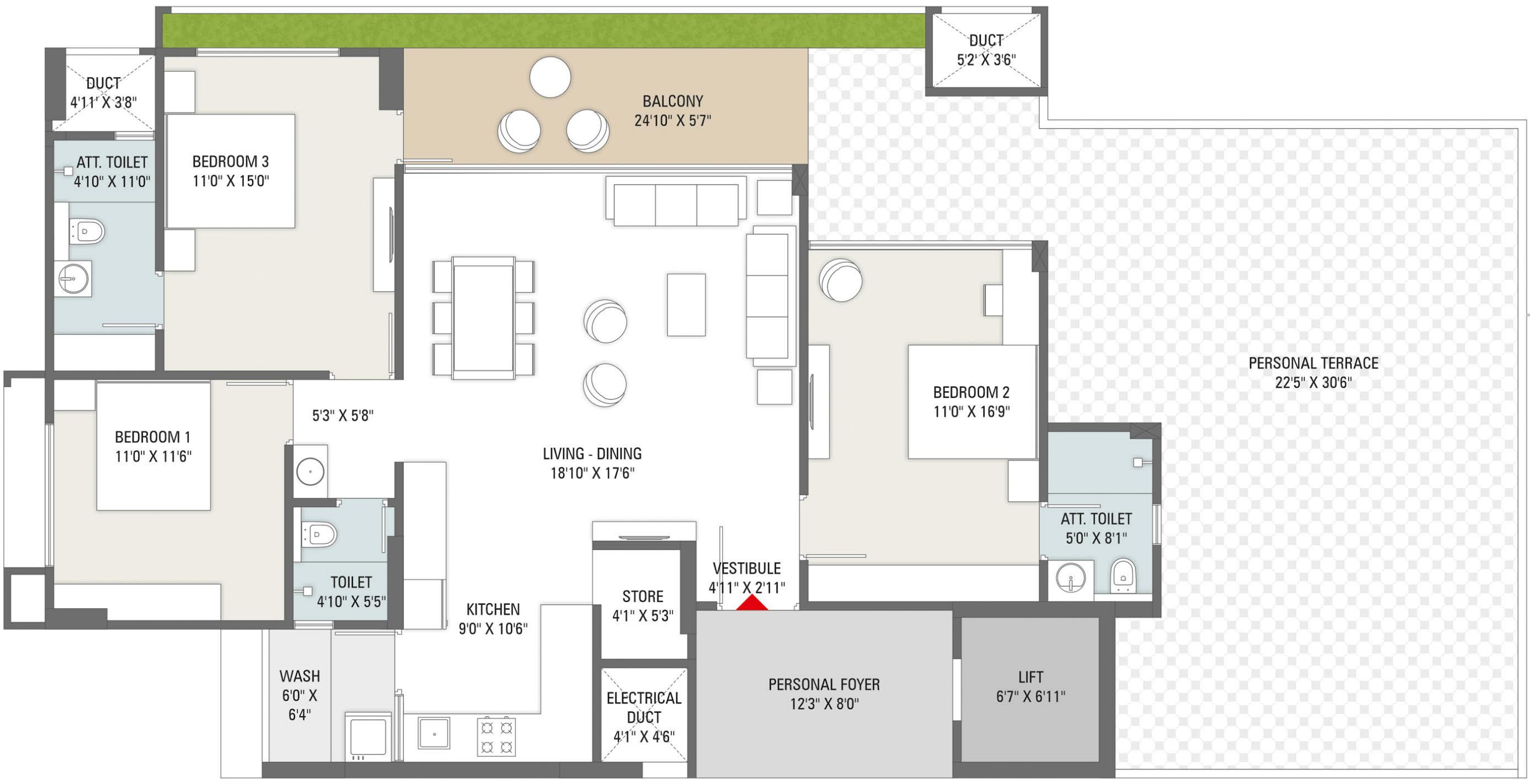




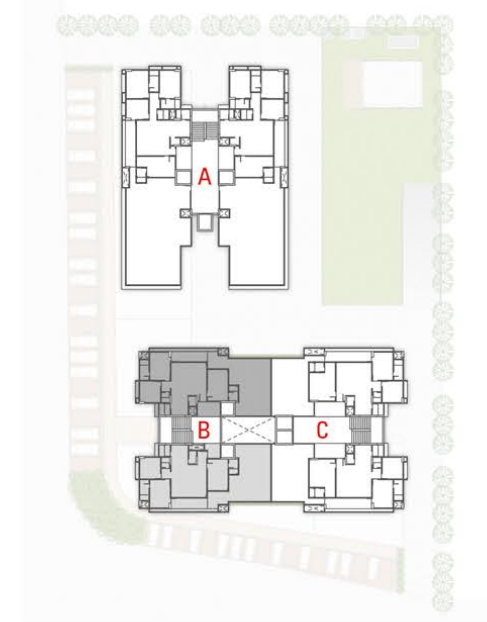
4 BHK PENTHOUSE PLAN

{ BLOCK - A | 13TH FLOOR }

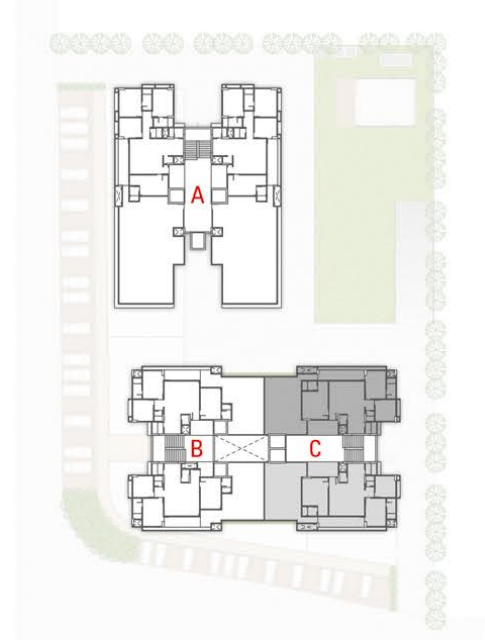




**3 BHK
PENTHOUSE PLAN
{BLOCK - B | 13TH FLOOR}**



**3 BHK
PENTHOUSE PLAN
{BLOCK - C | 13TH FLOOR}**





THE ROYAL RESIDENCES



Well suited to the elite royals, The Stately brings richness and class to the core of its structures, with the incorporation of Italian marble and French windows in the residences. Each home has a Vastu-compatible entry too.



A CAPTIVATING RENDEZVOUS FOR
SOOTHING EVENING

24'10" HUGE BALCONY



A LUXURIOUS LIFE
AWAITS YOU !





SPECIFICATIONS



STRUCTURE
Earthquake Resistant R.C.C Work.



FLOORING
Unique Premium Quality Vitrified Tiles.
China Mosaic Flooring In Terraces.



KITCHEN
Granite Top Platform With S.S Sink Designer Glazed Tiles Dado - Up To Lintel Level.



DOOR & WINDOWS
Decorative Main Door With Wooden Frame.
All Other Doors Are Flush Door With Wooden Frame With Good Quality Fittings.
Aluminum Sliding Window With Heat Reflective Glass.



TERRACE
China Mosaic for heat reflection and thermal insulation.



ELECTRIFICATION
3 Phase Concealed Copper Wiring With Premium Modular Switches.



WALL FINISH
Internal Smooth Cement Plaster With Putty Finish.
External Double Coat Sand Face Plaster With Neo Classical Texture Paint.



TREATMENT
Anti Termite Treatment.



TOILET/ PLUMBING
Designer Glazed Tiles Up To Lintel Level.
Premium Quality Bath Fitting & Sanitary Wares.

BRAND WE USE

ELEVATOR (or equivalent)

FLOORING (or equivalent)

ELECTRIC WIRE (or equivalent)

SWITCHES (or equivalent)

SANITARY & BATH FITTING (or equivalent)

1.) Commencement and timely execution of the project is subject to all necessary approvals from relevant govt. authorities, occurrence of natural calamities or any other external factors beyond developer's control.
2.) The dimensions shown in the brochure are approximate. 3.) The developer reserves the right to change, revise or make any modification, addition, omission or alteration in the scheme as a whole or part thereof, at their sole discretion. 4.) The brochure is only for illustration & private circulation purpose & is not a legal document or a binding one. 5.) Government levies like GUDA, UGVCL, Stamp Duty, Registration charges, Legal charges, GST and any other additional charges are to be borne by the member. 6.) Subject to Gandhinagar Jurisdiction.

II
THE
STATELY
by सामवेद



DEVELOPER :

phadev
BUILDCON

ARCHITECT :

imbue designs
architecture & interior

STRU. AGENCY :



LIGHT AGENCY:

**ATELIER
LIGHTS**

MEP :

mc
MAHESHWARI CONSULTANTS
MEPF CONSULTANTS




THE STATELY
 by **सामवेद**
 3 & 4 BHK SPACIOUS LIVING & SHOPS

ADDRESS :

THE STATELY, School of Achiever Road,
 Opp. Toritos Restaurant, Kudasan, Gandhinagar 382421.
Mo. 76 00 76 6815

NEAR BY 1 TO 10 MIN.

- TCS IT CAMPUS
- SCHOOL OF ACHIEVERS
- VED & KAMESHWAR INT. SCHOOL
- NID / NIFT
- JAMNABHAI NARSEE SCHOOL
- PDEU UNIVERSITY
- GUJARAT NATIONAL LAW UNIVERSITY
- BAPS VIDYAMANDIR
- INFOCITY, DA-IICT
- IIT GANDHINAGAR, CRPF, AIRFORCE CAMP
- KARNAVATI UNIVERSITY
- GUJARAT POLICE ACADEMY
- BAPS GIRLS VIDHYAMANDIR
- INFOCITY JUNIOR
- RADIANT SCHOOL OF SCIENCE

- SHREE DHOLESHWAR MAHADEV
- SMVS - SWAMINARAYAN DHAM
- SWAMINARAYAN TEMPLE
- JAIN TEMPLE

- METRO STATION - RANDESAN
- GIFT CITY
- INDRODA PARK
- SURYAJYOT LAKE
- GANDHINAGAR RAILWAY STATION
- MAHATMA MANDIR
- SMVS HOSPITAL

- GUDA GARDEN
- SABARMATI RIVER FRONT
- SACHIVALAY, GANDHINAGAR
- AHMEDABAD AIRPORT
- ARANYA UDHYAN
- SWAGAT HOLIDAY MALL
- PANTALOONS, JADEBLUE, D-MART & ZUDIO
- WESTSIDE
- RELIANCE TRENDS & RELIANCE MART

- CITY PULSE GANDHINAGAR
- NY CINEMAS
- PVR
- CLASSIC CINEMAS
- Complex Cinemas

THE INCREDIBLE LOCATION

A LOCATION THAT IS CLOSE TO EVERYTHING.

Conveniently Located,
THE STATELY Ensures Easy Access To
 All Essentials, From School To Hospitals,
 From Hotels To Entertainment And More....